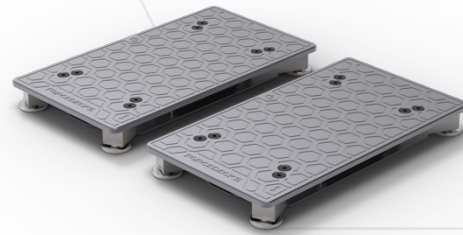


# FORCEDECKS

## DUAL FORCE PLATE SYSTEM

### MODEL: FDMINI

## TECHNICAL SPECIFICATIONS



FORCE PLATFORM	
Model Name	FDMini
Quantity	2 plates per system
Dimensions (per plate)	400 mm (16 in) L x 225 mm (9 in) W x 42 mm (1.7 in) H
Weight	5 kg (11 lb) each / 10 kg (22 lb) per pair
Sampling Rate	Up to 1,000 Hz
Capacity	1,000 kg (2,200 lb)
Safe Overload	1,500 kg (3,300 lb)
Ultimate Overload	2,000 kg (4,400 lb)
Resolution	c. 15 g / 0.15 N
Linearity and Hysteresis	< 0.05% over measuring range

FOAM SURROUND	
Dimensions	512 mm (20.2 in) L x 285 mm (11.2 in) W x 42 mm (1.7 in) H
Weight	1.3 kg (3 lb)

ELECTRICAL	
Connectivity	USB

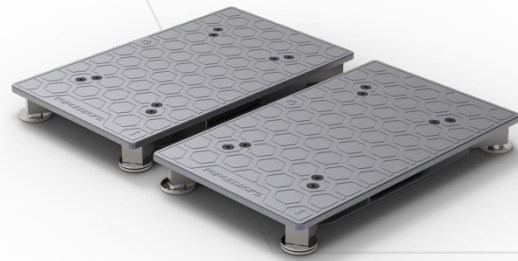
SOFTWARE SYSTEM REQUIREMENTS	
Operating System	Windows 7 x64 or later
Processor	Intel i5/ i7/ i9
Ram	8 GB or greater
Storage	500 MB minimum for install
Ports	1 x USB 2.0 / USB 3.0

# FORCEDECKS

## DUAL FORCE PLATE SYSTEM

### MODEL: FDLITE

## TECHNICAL SPECIFICATIONS



FORCE PLATFORM	
Model Name	FDLite
Quantity	2 plates per system
Dimensions (per plate)	485 mm (19.1 in) L x 300 mm (11.8 in) W x 55 mm (2.2 in) H
Weight	9 kg (20 lb) each / 18 kg (40 lb) per pair
Sampling Rate	Up to 1,000 Hz
Capacity	2,000 kg (4,400 lb)
Safe Overload	3,000 kg (6,600 lb)
Ultimate Overload	4,000 kg (8,800 lb)
Resolution	c. 15 g / 0.15 N
Linearity and Hysteresis	< 0.05% over measuring range

FOAM SURROUND	
Dimensions	848 mm (33.4 in) L x 848 (33.4 in) mm W x 55 mm (2.2 in) H
Weight	1.3 kg (3 lb)

ELECTRICAL	
Connectivity	USB

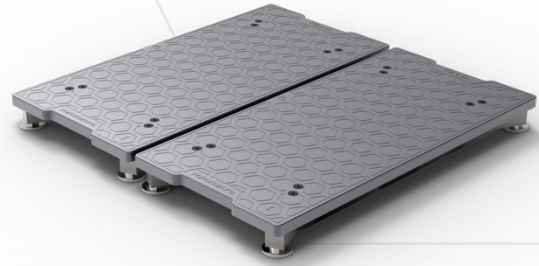
SOFTWARE SYSTEM REQUIREMENTS	
Operating System	Windows 7 x64 or later
Processor	Intel i5/ i7/ i9
Ram	8 GB or greater
Storage	500 MB minimum for install
Ports	1 x USB 2.0 / USB 3.0

# FORCEDECKS

## DUAL FORCE PLATE SYSTEM

### MODEL: FDMAX

## TECHNICAL SPECIFICATIONS



FORCE PLATFORM	
Model Name	FDMax
Quantity	2 plates per system
Dimensions (per plate)	700 mm (27.6 in) L x 350 mm (13.8 in) W x 65 mm (2.5 in) H
Weight	20 kg (45 lb) each / 40 kg (90 lb) per pair
Sampling Rate	Up to 1,000 Hz
Capacity	2,000 kg (4,400 lb)
Safe Overload	3,000 kg (6,600 lb)
Ultimate Overload	4,000 kg (8,800 lb)
Resolution	c. 15 g / 0.15 N
Linearity and Hysteresis	< 0.05% over measuring range

ELECTRICAL	
Connectivity	USB

SOFTWARE SYSTEM REQUIREMENTS	
Operating System	Windows 7 x64 or later
Processor	Intel i5/ i7/ i9
Ram	8 GB or greater
Storage	500 MB minimum for install
Ports	1 x USB 2.0 / USB 3.0